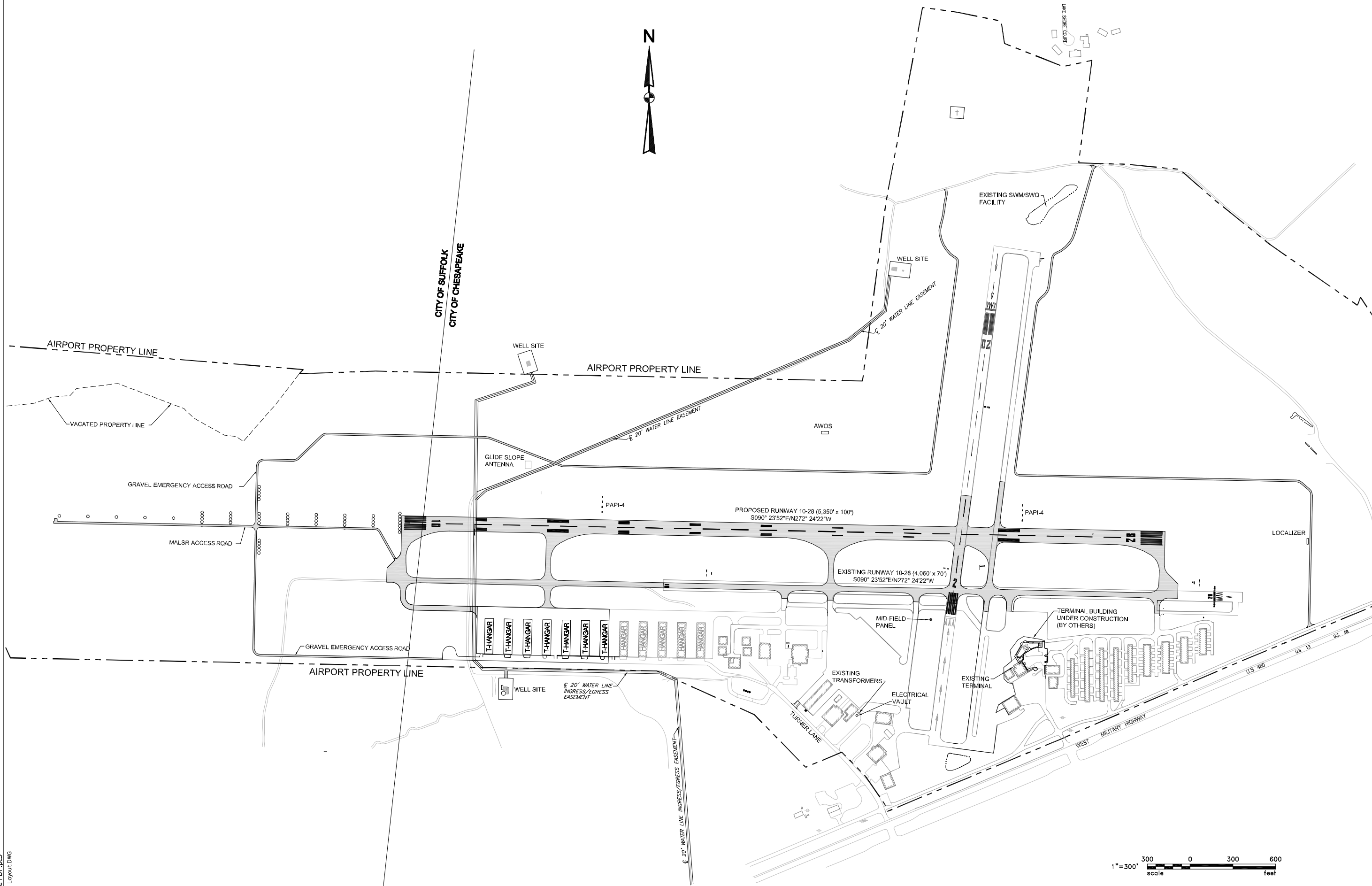


S:\Projects\Hampton Roads\7103-0902 Runway - Phase II (Final Design)\Runway Layout.dwg, 7/26/2010 1:59:22 PM, mmerdl, Adobe PDF.pc3  
Runway Layout.DWG



**TALBERT & BRIGHT**  
ENGINEERING & PLANNING CONSULTANTS  
1015 KKAUSE ROAD, SUITE 100  
CHESTERFIELD, VIRGINIA 23034  
PHONE: 804-766-6678 FAX: 804-766-6671

REV. NO.	DESCRIPTION	DATE
1	REVISED	7-26-2010

**PROPOSED RUNWAY DEVELOPMENT**  
Hampton Roads Executive Airport - Chesapeake, Virginia

Date	AUGUST 2009
Scale	1" = 300'
Drawn	REK
Checked	STP
Project No.	7103-0902
Sheet No.	<b>1</b>